

centralkansas.k-state.edu/4-h

# Central Kansas District 4-H

**February, 2025**

## 4-H Council News

### March Meeting

The March 4-H Council Meeting will be held on Monday, March 24 at 7:00 p.m., in Salina. We will meet in the College Center Conference Room. Council members should watch their email for the agenda packet closer to the meeting date.

## 4-H Newsletter Deadlines for 2025

If you have something you would like in the 4-H Newsletter, be sure to email it to [klittich@ksu.edu](mailto:klittich@ksu.edu).

Deadlines are:

- March - February 10
- April - March 10
- May - April 10
- June - May 10



**K-STATE**  
Research and Extension

K-State Research and Extension is an equal opportunity provider and employer.

[Kansas4-H.org](http://Kansas4-H.org)

## Project Awards Going to State Contest

**Congratulations** to those individuals who have their Project Award Applications going to the state contest:

### Communications:

Lillian Hulse, Pleasant Valley

### Horticulture & Landscape Design:

Ariana Baltazor, Willing Workers

### Uncrewed Aircraft Systems:

Eian Pracht, Smoky View

### Robotics:

Eian Pracht, Smoky View

### Visual Arts:

Acacia Pracht, Smoky View

### Wildlife:

Jaelyn Gates, Cardinal



## 2025 4-H Ambassadors

Congratulations to the new Central Kansas District 4-H Ambassadors:

Zoe Ade, Boldly Go

Caleb Schlatter, Boldly Go

Kyson Griffin, Willing Workers

Continuing Ambassadors are:

Acacia Pracht, Smoky View

Kaitlyn Watkins, Willing Workers

Eian Pracht, Smoky View

## 4-H Council Scholarships

4-H Council scholarships are available for numerous 4-H sponsored events. If you are interested in receiving a scholarship, it is important that you not only complete the 4-H Council Scholarship Application, but that it is submitted to either Extension Office at the same time you pay the registration fee. The application can be found at <http://www.centralkansas.ksu.edu/4-h> under 4-H Member Forms & Documents. Applications cannot be submitted online. Scholarships must be submitted before the registration deadline. **Any applications received after the registration deadline will not be considered for a scholarship.**

# Gavel Games & Model Meetings Results

Congratulations to all the participants! The judges had positive comments and enjoyed your presentations! Remember, teams presenting on Friday were not eligible for Regional 4-H Club Day. RQ = Regional Qualifier

## Gavel Games: Junior

Boldly Go Junior A - Purple (RQ) – Anna, Bradley, Danielle, and Jacob  
Pleasant Valley Junior B – Red – Emrie, Cassidy, Quinnley, and Peyton  
Boldly Go Junior B - Purple (RQ) – Bradley, Sawyer, Finley, and Imogen  
Smoky View Junior A - (Friday) – Blue – Haylie, Kenzie, Eddie, J.D., and Maia  
Cardinal Junior A – Blue – Ella, Reid, Amayah, Lydia, and Elias  
Sunny Valley Junior A – Red - Amelia, Aaron, and Gideon  
Friendly Valley Junior A - (Friday) Blue – Kloey, Laura, Harry, Logan, and Jace  
Woodsdale Junior B - Red – Vivian, Lucy, Kyson and Kathleen  
Pleasant Valley Junior A – Blue – Colbie, Ruby, Mady, and Charlotte  
Woodsdale Junior A – Red – Riley; Kyson, Coy, Makayla and Kathleen

## Gavel Games Senior

Boldly Go Senior A - Purple (RQ) – Caleb, Matthias, Robert, Erik, and Zoe  
Friendly Valley Senior A - Purple (RQ) – Casson, Brilee, Nolan, Cullen, and Isaiah  
Cardinal Senior A – Blue – Alani, Mara, Jocelyn, and Lauren  
Woodsdale Senior A – White – Elizabeth, Colbey, Ady, and Lydia

## Gavel Games: Extemporaneous

Extemp A - Participation – Kyson, Thea, Acacia, Zoe and Eian

## Model Meetings

Willing Workers – Purple – Thea, Ariana, Maria, Noah, Kinsley, Cadence, Kaitlyn, Kyson, and Kierah

# Information On Fundraisers

## Attention 4-H Families, Districtwide Project Leaders, & Organizational Leaders



## Central Kansas District Fundraising Policy

The Central Kansas Extension Board adopted a policy to go alongside the Kansas 4-H Policy regarding fundraising at the February, 2014, Board Meeting. The policy is:

“4-H members MAY NOT solicit funds to help fund their individual 4-H projects. 4-H members may fundraise for a specific 4-H EDUCATIONAL trip. Donations given directly to a 4-H member ARE NOT tax deductible because they do not go to a 4-H club or group. Any fundraising programs by clubs or individuals MUST be approved by the 4-H Youth Development Agent; the funds must be used to further the 4-H mission; the account procedures must be appropriate and in accordance with the POLICY; and the 4-H name and emblem must be properly used.”

**Any fundraising done in the name of 4-H needs to be approved by our office. Contact Kate.**

## Annual Ottawa County 4-H Foundation Fund Drive

The annual Ottawa County 4-H Foundation Fund Drive will be held March 1 - 31 this year.

## Tri-Rivers Fairboard Fundraiser

The Tri-Rivers Fairboard would like to invite you to join the Dillon's Community Rewards Program which donates a percentage of your total Dillons bill to the Saline County Fair Association (Fairboard) which we use to support 4-H. You may sign up at: <http://www.dillons.com/communityrewards>

# 4-H Scholarships

Attention High School Seniors!! Are you in search of some funds to further your college education? Here are several 4-H scholarships you may be eligible for:

## Local 4-H Scholarship Information

Local CKD 4-H Scholarship and Tri-Rivers Fair Scholarship information is now posted on the CKD 4-H Scholarship website - <https://www.centrankansas.k-state.edu/4-h/scholarships/index.html>

**All scholarships will be due ONLINE no later than March 1, 2025.**

If you need a letter of recommendation from Kate ([klittich@ksu.edu](mailto:klittich@ksu.edu)), she asks that you send an email requesting a letter at least 2-3 weeks before the due date. Be sure to include your most current resume and 4-H permanent record with your email.

## Kansas 4-H State Scholarship Information

For more information on the Kansas 4-H Scholarships, please go to <https://www.kansas4-h.org/resources/awards-and-recognition/scholarships.html>

**All scholarships will be due ONLINE no later than March 1, 2025.**

## YQCA 2025 Scholarship Program

YQCA is excited to announce the 2025 Scholarship Program available to high school seniors and students enrolled in a 2-4 year university or certification program. In order to be considered for this scholarship, you must:

- Be a high school senior or a high school graduate up to 21 years of age.
- Have an active YQCA certification at the time of application (2025).
- Have had active YQCA certification the previous two years (2023, 2024).

Applications close February 17, 2025.

For more information and to apply, go to <https://yqcaprogram.org/local/scholarship-program.php>

## Insect Art Contest

The K-State Research and Extension Pesticide Safety and IPM Program is hosting its annual insect-themed art contest, open to all ages and skill levels in Kansas! This year, the theme is “By the Light of the Moon: Insects at Night.” The goal is to explore which insects are active or inactive at night and why, then create artwork that fits the contest theme.



Entries must be post-marked or received before the April 15, 2025 deadline. For more information and to register, go to <https://www.ksre.k-state.edu/pesticides-ipm/>

## Sewing Workshop

Come make a bag! The goals for this workshop are to put in a zipper, use fusible foam, complete a bag, and/or work on other sewing projects. Cost is \$20 and includes lunch on February 15 and supply kit for bag. February 22 will be optional for completing the project if more time is needed. Both dates are from 10:00 a.m. – 3:00 p.m. Please RSVP at



<https://tinyurl.com/CKDSewingWorkshop2025> by February 7. Payment needs to be made to Central Kansas District 4-H Council and received by the registration deadline. An email will be sent with the location. Please bring your own sewing machine if you have one. If you have another sewing project you are currently working on, please bring it along.

# ***Livestock Information***

## **Attention Livestock Exhibitors – 2025 YQCA Certification**

Youth for the Quality Care of Animals (YQCA) is a national, multi-species youth livestock quality assurance program that focuses on food safety, animal well-being, and character development, through an age-appropriate educational curriculum for youth 8-21 years of age. This program is an annual certification that grows with a young person, so the learning modules are different every year.

**CHANGES TO YQCA REQUIREMENTS** - YQCA will now only be required **every other year**, unless you are a newly enrolled livestock family (this is your first year in a beef, swine, sheep, meat goat project) or plan to attend the Kansas State Fair Grand Drive, and/or Kansas Junior Livestock Show (KJLS). If you are not newly enrolled in a livestock project or will not attend KSF or KJLS, you are required to complete the YQCA certification in EVEN YEARS (2026, 2028, 2030, etc.).

If you are a 7-year-old and do not plan to show at KJLS, you are not required to have your YQCA certification, but you are more than welcome to attend just for the learning experience (no registration needed). If you are a **7-year-old who will show at KJLS, you must be YQCA certified** by attending an instructor-led course.

If you need YQCA certification for this year, the class for 2025 is set for April 10 (Minneapolis Courthouse Meeting Room), and will begin at 6:30 p.m. Parents do not need to attend. They may drop off and pick up children accordingly. Also, know that if you do not wish to attend in-person training, the online course is available.

Follow the link <https://yqcaprogram.org/> to log into your 4H Online account and sign up for a class. Help videos including information on registering, logging in, how to sign up for courses, and more can be located at <https://www.youtube.com/@yqca2199>. Please remember to have members complete the **PRE-TEST** before coming to the course and the **POST TEST** after attending the course. They will not be able to receive their certificate until both are completed. For more details about the YQCA program, contact Justine Johns ([jwh04@ksu.edu](mailto:jwh04@ksu.edu) or 785-392-2147).

## **Beef Weigh-In & Tagging for District Beef Project Members**

Beef Weigh-in will be Saturday, March 8, in two locations. From 8:00 a.m. - 11:30 a.m. we will be at Glenn Engelland's Farm and from 1:00 p.m. - 3:00 p.m. at Schrader Ranch. Regardless of where you plan to go, please go to <http://www.centrankansas.ksu.edu/4-h> and click on the Beef Weigh-in sign up for a spot before Thursday, March 6. Sign-up will be ONLINE ONLY. Both locations are open to all District 4-H Members. All animals will have an official "Kansas 4-H" ear tag put in the ear at a cost of \$3.50/tag.

➔ We will be weighing, tagging **all market animals, and tagging all commercial heifers**. **Photo submissions are no longer accepted as a way to tag commercial heifers**. Registered heifers and bucket calves DO NOT need to come to weigh-in and tagging.

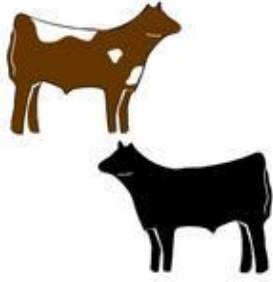
## **Small Animal Weigh-In & Tagging - Market & Breeding Meat Goat, Sheep & Swine**

The Districtwide small animal tagging and weigh-in will be held April 23, in Salina (fairgrounds) and April 24, in Minneapolis (fairgrounds) from 4:00 p.m. – 6:00 p.m. for meat goats, sheep, and swine. Tags will cost \$3.00/tag.

➔ Swine projects are now required to be at the small animal weigh-in and tagging. **Photo submissions are no longer accepted as a way to tag pigs**. You will need to bring all market and breeding swine projects to tagging. They will not be weighed and will be **left on trailers for tagging**. Members or an associated adult will be required to tag all swine. All market and breeding sheep, meat goats and swine need to come to weigh-in.



# CENTRAL KANSAS BEEF CLASSIC SHOW



This “Blow and Go” show will be held on Saturday, April 26. The show is open to any bonafide 4-H and FFA member who has not yet reached their 19<sup>th</sup> birthday before January 1, 2025. There will be a special class for the 4-H members enrolled in a club in the Central Kansas District. The entry fee is \$25 per head, but after April 18 the fee will increase to \$30 per head. All fees must accompany registration. For registration information, please go to the District website (<http://www.centrankansas.ksu.edu>), click on 4-H Youth and Development on the left-hand side, and a flyer will be located under Upcoming Events and Online Registration.

## K-State Junior Producer Days

Junior Swine Producer Day is Saturday, March 1, 2025, and Junior Meat Goat Producer Day is Saturday, March 22, 2025. Information, including tentative schedules and registration details, can be found online on the KSU Youth Livestock Program website at <https://www.asi.k-state.edu/extension/youth-programs/events/ks-jr-producer/>. Registration is open and limited to 400 attendees, on a first come, first served basis. This is a family event. Anyone attending, including all youth, parents, and adults, must register. You must register by the deadline to receive a t-shirt. If you prefer to register by paper and send a check via the mail, please contact Lexie Hayes at [adhayes@ksu.edu](mailto:adhayes@ksu.edu). If you opt for the paper option, registrations must be received before the event has reached the registration limit, as well as by the deadline listed, to receive a t-shirt.

## Willie and the Beanstalk

*Willie and the Beanstalk* is a contest open to high school, middle school, elementary school, 4-H, and/or FFA teams interested in the scientific principles surrounding plant growth. The challenge is to grow the largest soybean plant in a 40-day time span and document this effort.

Beginning on a common seeding day, April 6, 2025, contestants will grow a soybean plant for 40 days, and document their activities. Entries can be scored by their adviser, or plants can be submitted to the Department of Agronomy in Throckmorton Hall during Kansas State University Open House for scoring. Prizes will be awarded for the top entries in each judging category, and all entrants win a t-shirt.

The contest is open to 3-person teams of K-12 students living in Kansas. The contest will have two divisions, K-8<sup>th</sup> grade and 9<sup>th</sup> - 12<sup>th</sup> grade. **Deadline for submitting an entry form at the contest website is February 24, 2025.** Additional information is available on the contest web site at <http://beanstalk.agronomy.ksu.edu> and questions can be addressed to [beanstalk@ksu.edu](mailto:beanstalk@ksu.edu).

## Bomgaars Virtual Show Event

The Show Clinic will cover the basics of animal selection, feed and nutrition, fitting, and some showmanship tips. Species of focus will be beef cattle, sheep, goats, and pigs. This is a free event and will be hosted virtually. Pre-registration is required. A link will be sent to each individual who is registered to join the call. This event will be Wednesday, February 12, 6:00 p.m. – 7:00 p.m. Click the QR code or this link to register.  
<https://tinyurl.com/BomgaarsVirtualShowEvent>



# County Fair Information

It is hard to imagine that the county fairs will be here before we know it. The planning has begun. Watch for more details in future 4-H newsletters and emails to 4-H families.



## Fair Superintendents and Assistant Superintendents

The dates for the Ottawa County Fair are July 15-18. The Tri-Rivers Fair will be on July 31 - August 4 (pre-fair days on July 29 and 30). Both fairs need superintendents and assistants. We need a lot of parents and youth to help ensure a smooth-sailing event. Do not forget that these leadership and citizenship opportunities can be counted in the 4-H member's record book. Interested 4-H members, parents and volunteers should sign up online by April 1 by going to <http://www.centrankansas.ksu.edu/4-h>, and you will find a link under "Upcoming Events and Online Registration" for County Fair Superintendent and Assistant Superintendent Sign-up. **Note: Sign-up is not open at this time but will be open soon.**

## Fair Papers

The fair papers for the county fairs will be posted online as soon as they become available. Watch the newsletter and/or email for when they are posted.

## 2025 Fair Dates

Mark your calendars! Fair dates for 2025 have been announced.

Ottawa County Fair — July 15-18  
Tri-Rivers Fair — July 31 - August 4

Watch the newsletter and emails for dates for pre-fair judging and other fair activities.

## District 4-H Quiz Bowl Volunteers Needed!

Approximately 20 volunteers are needed to help District 4-H Quiz Bowl run smoothly. Registered adult volunteers are needed for moderators/judges (reading questions), competition room monitors and waiting room monitors.

Adults and 4-H member volunteers, 7<sup>th</sup> grade and up who do not want to participate on a team, are needed for scorekeepers, buzzer monitors and time keepers. **A brief orientation for volunteers will be at 8:15 a.m., prior to the competition beginning at 8:30 a.m.**

To volunteer, please go to <http://www.centrankansas.ksu.edu/4-h> under Upcoming Events and Online Registration. Select all positions you would be willing to help with, and positions will be assigned based on registration. **Volunteer Registration Deadline has been extended to February 7.**

## UAS Workshop

Are you interested in Uncrewed Aircraft Systems? 4-H Members between the ages of 7 and 18 are invited to register for this workshop on March 15 at 10:30 a.m. at the College Center Conference Room on the K-State Salina Campus. Event objectives for this workshop are safety rules, flight basics, drone flights, and an obstacle course flight competition. Cost is \$15 person and includes lunch and contest fees. Each individual (including parents and guardians) needs to register. Registrations are due online by March 10. Payment must be made to Central Kansas District 4-H Council and needs to be received by the registration deadline. Participants will be using the equipment provided and asked to not bring a drone. Register at <https://tinyurl.com/CKD2025UASWorkshop>.



# ***Leadership Opportunities***

## **Districtwide Leadership Workshops**

Come learn some fun activities you can use at club meetings for ice-breakers, team building, and discussion. The workshop will be held on Thursday, March 27, from 7:00 - 8:30 p.m. in the College Center Conference Room. **Please register by Thursday, March 20.** Another districtwide leadership workshop will be held on Tuesday, April 29, from 7:00 - 8:30 p.m. in the Minneapolis Courthouse Meeting Room. **Please register by Tuesday, April 22.** Register by going to <http://www.centrankansas.ksu.edu/4-h/> and click on the link under "Upcoming Events & Online Registration."

Remember...This workshop will count for the leadership workshop on the pin application. ***Who can attend?*** 4-H Members, Parents, and Volunteers can attend! Participants will learn activities they can take back to their clubs and other groups they work with or are a part of. Key lessons that will be emphasized are: teamwork, cooperation, leadership, problem-solving, communication, and decision making.

## **Host Families Needed for International Delegates**

Looking for fun and excitement this summer? States 4-H and Kansas 4-H has a great opportunity for families this summer to host a new international friend in your home this summer. Kansas 4-H International Exchange Programs are offering hosting opportunities for families to host youth from Costa Rica: June 25 - July 19; Japan: July 21 - August 16; Norway: June 25 - July 19; and Taiwan: July 3 - August 2. Host families are needed to host an international boy or girl. The international youth will be between the ages of 12 - 18. Kansas 4-H's responsibility is to make host family assignments matching each delegate with an American same-gender host sibling as soon as possible so that families and exchange delegates can communicate and get to know each other.

Any Kansas family with children aged 10-19 who are interested in a cultural exchange, may host. A separate bed is required, but not necessarily a separate room from the host sibling. Delegates are 100 percent medically covered with 4-H insurance and bring their own spending money. They can go on host family vacations, camping trips or join their host siblings for summer camps and the county fair. The focus is everyday family life. Interested families can complete the application at <https://www.states4hexchange.org/apply/host/> to start the process. The Japanese Delegates' personal information forms arrive in February.

If you have further questions, please call Pam Van Horn, Kansas 4-H Japanese Exchange Coordinator, (785) 826-8917, or e-mail [pvanhorn@ksu.edu](mailto:pvanhorn@ksu.edu) or Mary Kay Munson, State Coordinator Costa Rica, Norway, and Taiwan, [mkm2@ksu.edu](mailto:mkm2@ksu.edu).

## **4-H Camp Update**

A quick update regarding 4-H Camp...

- 4-H Camp is for ALL AGES!
- 4-H Camp Details on cost, dates, and age categories can be found at <https://www.rockspringsranch4hcamp.org/sessions-rates/>
- 4-H Camp 2025 will be using the "Open Enrollment" method. 4-H Open Enrollment means families can register for any 2025 4-H Camp Session that fits their schedules. For additional information, go to <https://www.rockspringsranch4hcamp.org/>
- Our older 4-H members who would typically be interested in serving as a camp counselor are encouraged to participate in the LIT and/or CIT camp sessions at Rock Springs.
- **Registration is handled on a first-come, first-serve basis.**
- The Central Kansas District 4-H Council budgeted a \$60 per night scholarship for 4-H members to attend 4-H camp. In order to receive this scholarship, an approved scholarship application must be received no later than **Tuesday, April 1, by 5:00 p.m.** at either of Extension Office.
- Other scholarships funds may be available.
- If any family has already paid their registration in full, please contact Kate.





# ***Districtwide Project News***

## **Districtwide Cloverbuds**

Each month, we focus on one 4-H project area through books, activities, experiments, and snacks.

Date: Second Sunday of the month

(February 9, March 9, April 13, May 11, June 8, August 10)

Time: 2:30-4:00 p.m.

Location: First Christian Church, 2727 E. Crawford, Salina)

RSVP: Email Allison at [allisonlecklider@yahoo.com](mailto:allisonlecklider@yahoo.com)

\*Must be received at least two days before the meeting (Friday) so there are adequate supplies.

## **Rabbit Project Meeting**



The next Districtwide Rabbit meeting will be Tuesday, February 25 at 5:15 p.m. at First Baptist Church, 843 Lewis Avenue, Salina. We will have a rabbit quiz bowl contest, Breed ID contest and learn about rabbit judging contests. Please bring your rabbits.

Put Tuesday, May 27, 5:15 p.m. at First Baptist Church on your calendar for a rabbit meeting about fair preparation, and showmanship demonstrations and practice. For more information, contact Lindi Fahrenthold, [lfahrenthold@yahoo.com](mailto:lfahrenthold@yahoo.com).

## **New Horse ID's - Beginning for the 2024-2025 4-H Year**

The Kansas 4-H Horse ID Certificate (P1039) can be found at [https://bookstore.ksre.ksu.edu/item/horse-identification-certificate\\_P1039](https://bookstore.ksre.ksu.edu/item/horse-identification-certificate_P1039). The form has been updated for the 2024-2025 4-H program year. Beginning with the 2024-2025 4-H program year, please use the new form and destroy previously used 4-H Horse ID Certificates. As a reminder, to properly identify your horse:



- Complete the 4-H Horse ID Certificate.
- The form **MUST BE** front and back of one page, not 2 pages.
- A standard-size color picture **MUST BE** attached for identification purposes. This should include all four feet and legs showing and a profile of the horse with the head turned a quarter turn toward the camera. **ALL** markings need to be clearly visible in the photo.
- Have your Extension Agent sign it and copy it.
- A **COPY** of the Horse ID Certificate is kept on file in the Extension Office.
- The 4-H Horse member maintains the **ORIGINAL** certificate.
- The **ORIGINAL CERTIFICATE** is presented by the 4-H member to show staff for check-in at the local 4-H horse shows.
- This form can be signed anytime between now and May 30, 2025.

Beginning in 2025, registration papers **WILL NOT** be accepted to identify horses for the 4-H Horse Project. An example of the Horse ID Certificate can be found at <https://www.kansas4-h.org/projects/animal-science/horse/docs/SampleHorseID.pdf>.

Additionally, the 4-H Horse Show Rulebook (S133) has been revised and can be found at [https://bookstore.ksre.ksu.edu/item/kansas-4-h-horse-show-rulebook\\_S133](https://bookstore.ksre.ksu.edu/item/kansas-4-h-horse-show-rulebook_S133). This will not affect any deadlines within the 4-H Horse Project. Supplemental educational materials will also be released throughout the year to assist 4-H members, leaders and Extension staff with the 4-H Horse program.



# 4-H Project Curriculum

There are a lot of resources to help 4-H members and project leaders with their projects. If you are curious about what the content might look like, call the Extension Office. More than likely we have a copy of the curriculum in our office that you can check out to review. We can also help with the sources if you want to purchase your own copies. If you have other questions, ask your club leader or call the Extension Office.

## Free All-Purpose Flour

For those interested in the Foods and Nutrition project, contact Lisa Newman, Family & Community Wellness Agent in the CKD Salina Office, for free flour from K-State! Each 4-H member that contacts Lisa will receive 6 cups of "Willie's Pride" All-Purpose Flour while supplies last. This is a great opportunity to practice your baking skills or try out a new recipe.

Lisa Newman, Family & Community Wellness Agent, Central Kansas District - [lmnewman@ksu.edu](mailto:lmnewman@ksu.edu)



# Babysitting Clinic

March 18 9AM-Noon  
Minneapolis Public Library  
519 Delia Ave

OR

March 20 9AM-Noon  
Salina Family Healthcare Center  
651 E Prescott Rd

Registration Fee: \$5

**SPACE IS LIMITED. REGISTER ONLINE:  
[HTTPS://TINYURL.COM/CKDBABYSITTING](https://tinyurl.com/CKDBABYSITTING)  
BY MARCH 12.**



The Business of Babysitting

Health and Wellness  
Intro to First Aid/CPR

Development and Activities



Are you interested in becoming a babysitter? Join K-State Research and Extension along with community partners to learn about the responsibility of babysitting. This clinic is for those ages 11-15. To register, click on this link. <https://tinyurl.com/CKDBabysitting>



# EXTRA

NEWS FOR CENTRAL KANSAS DISTRICT ORGANIZATIONAL LEADERS

## February Check-Up

Five months into the 2024-2025 4-H year...where has the time gone? Are you ready for the monthly check-up? There are many spring activities in front of us that are about to spring into action. Where is the club heading? How are members doing on projects? What great and wonderful opportunities are the project leaders teaching? Let's take a look . . .

### Review

- \_\_\_\_\_ **4-H Club Day Run-Offs explained to the 4-H members.** Run-Offs conducted Saturday, February 8.
- \_\_\_\_\_ **4-H Newsletter** read and important dates marked on calendar.
- \_\_\_\_\_ Review highlights from the **4-H Newsletter** at club meeting.

### To-Do

- \_\_\_\_\_ Volunteer Service Application and Renewal Form completed on all project leaders in 4HOnline.
- \_\_\_\_\_ Project Leaders conducting project meetings.
- \_\_\_\_\_ 4-H Club members inviting friends to join 4-H. Parents encouraging other parents to explore 4-H.
- \_\_\_\_\_ Check club mailbox at the Extension Office.
- \_\_\_\_\_ Report from the January 4-H council meeting.
- \_\_\_\_\_ Encourage 4-H members to update their Achievement Pins and Permanent Records.
- \_\_\_\_\_ Check club's progress toward goals and club annual summary up-to-date.
- \_\_\_\_\_ Visitors reported to Kate (klittich@ksu.edu).



### Promote/Recruit

- \_\_\_\_\_ 4-H Camp promoted.
- \_\_\_\_\_ 4-H Discovery Days promoted, June 4-6.

### Remember

- \_\_\_\_\_ Reminder . . . if needing to cancel from 4-H Club Day, please call the Salina Extension Office by NOON, Thursday, February 6.
- \_\_\_\_\_ 4-H Club Day at Salina South Middle School, 2015 Simmons (parking and entrance off of 4<sup>th</sup> Street), February 8.
- \_\_\_\_\_ 4-H Club Day contestants reminded that **NO PIANO OR KEYBOARD** is available for practice.




## ORGANIZATIONAL LEADER UPDATE

The next Organizational Leader Update will be held at 7:00 p.m., Thursday, April 3, via zoom. We will be discussing county fairs and more! You won't want to miss this update!





# February, 2025

Sunday	Monday	Tuesday	Wednesday	Thursday	Friday	Saturday
<b>UPCOMING DATES:</b> <b>March</b> <b>1</b> - ALL District and State Scholarships DUE Online <b>1</b> - District 4-H Quiz Bowl <b>8</b> - Spring Beef Weigh-In <b>20</b> - Districtwide Leadership Workshop, Registration Due <b>22</b> - Regional 4-H Club Day, Clay Center <b>24</b> - 4-H Council Meeting, Salina <b>27</b> - Districtwide Leadership Workshop, 7:00-8:30 p.m., Salina						
<b>2</b>	<b>3</b> District 4-H Quiz Bowl Team and Volunteer Registrations DUE Online (by 11:59 p.m.)	<b>4</b>	<b>5</b> 	<b>6</b> 4-H Club Day cancellations DUE by noon	<b>7</b> 4-H Club Day digital submissions DUE by noon	<b>8</b> 4-H Club Day, Salina South Middle School
<b>9</b> Cloverbud Meeting, First Christian Church, Salina 2:30 p.m.	<b>10</b>	<b>11</b>	<b>12</b>	<b>13</b>	<b>14</b>	<b>15</b> Sewing Workshop, 10:00 a.m. - 3:00 p.m., Location TBD
<b>16</b>	<b>17</b> President's Day Minneapolis Office Closed	<b>18</b>	<b>19</b>	<b>20</b>	<b>21</b> 	<b>22</b> Sewing Workshop, 10:00 a.m. - 3:00 p.m., Location TBD Kansas 4-H Horse Panorama, Rock Springs 4-H Ranch
CIA—Topeka 	<b>24</b>	<b>25</b> Rabbit Project Meeting, First Baptist Church, Salina, 5:15 p.m.	<b>26</b>	<b>27</b>	<b>28</b>	
<b>23</b> Kansas 4-H Horse Panorama, Rock Springs 4-H Ranch						



**Central Kansas Extension District**

**Salina Office**

Kansas State University Salina  
Aerospace and Technology Campus  
2218 Scanlan Ave  
Salina, KS 67401-8196

Address Service Requested

## THE 4-H YEAR IN FULL SWING

Dear 4-H Families,

Congratulations to all of our Gavel Games and Model Meeting participants! We are so proud of you for taking on the challenge, and we've heard from many of you how the experience has helped your 4-H meetings run more efficiently. That's great news and we love hearing about how youth are using what they've learned!

As we head into the next few months, we encourage you to take advantage of upcoming events like 4-H Club Day, Quiz Bowl, leadership workshops, and project-based activities to make the most of your 4-H experience! If you've not attended these events before, now is the time to come check it out!

Best Wishes,

Kate

---

**Minneapolis Office** • 307 N Concord • Suite 190 • Minneapolis, KS 67467-2140 • 785-392-2147 • Fax 785-392-3605

**Salina Office** • K-State Salina • 2218 Scanlan Ave • Salina, KS 67401-8196 • 785-309-5850 • Fax 785-309-5851